

## Zebrafish as a model for studying insect-borne diseases: A comprehensive review

Chetan P Warude<sup>1</sup>, Chaitali Kulkarni<sup>2</sup>, Dipak S Aher<sup>1</sup>, Prachi P Bhosale<sup>1</sup>, Yogita V Ahire<sup>1</sup>

<sup>1</sup> Department of Pharmaceutical Quality Assurance, Mahatma Gandhi Vidyamandir's Pharmacy College, Panchavati, Nashik, Maharashtra, India

<sup>2</sup> Assistant Professor, Department of Pharmaceutical Chemistry, Shree Santkrupa College of Pharmacy, Ghogaon, Karad, Maharashtra, India

### Abstract

Insect-borne diseases, counting malaria, dengue, chikungunya, and leishmaniasis, pose noteworthy worldwide health challenges, requiring innovative research models for understanding pathogenesis and creating effective treatments. This review investigates the utility of zebrafish (*Danio rerio*) as a model organism for studying these diseases, highlighting its natural and genetic advantages over conventional models like mice and rats. Zebrafish show fast improvement, transparent embryos, and genetic similarities to humans, making them an important tool for exploring host-pathogen interactions, drug screening, and vaccine development. The review examines the classification and challenges of major insect-borne diseases, emphasizing how zebrafish contribute to the study of particular pathogens. By detailing their applications in malaria, dengue, and other diseases, this work underscores the growing significance of zebrafish in infectious disease research. Finally, future research directions are proposed to further enhance their potential as a model for studying insect-borne diseases and progressing therapeutic strategies.

**Keywords:** Zebrafish, insect-borne diseases, malaria, drug testing, vaccine development.

### Introduction

In recent years, the zebrafish (*Danio rerio*) has emerged as an important model organism for studying a wide range of diseases, including those transmitted by insects, commonly referred to as insect-borne diseases. These diseases, such as malaria, dengue fever, chikungunya, and leishmaniasis, pose significant public health challenges worldwide, affecting millions of people each year. The ability to study these diseases effectively is crucial for understanding their underlying mechanisms and for developing effective treatments and preventive measures. This review aims to explore the use of zebrafish as a model organism for studying insect-borne diseases, emphasizing their biological and genetic characteristics that make them particularly suitable for this type of research (Franza *et al.*, 2024) <sup>[1]</sup>.

Model organisms play a vital role in biomedical research, serving as simplified systems that can mimic complex biological processes. They allow researchers to perform experiments that would be difficult or unethical to conduct in humans. Traditional models, such as mice and rats, have long been the cornerstone of disease research. However, they present several limitations, including high costs, ethical considerations regarding animal welfare, and longer generation times. (Tobin & Ramakrishnan, 2008) <sup>[2]</sup> Zebrafish, on the other hand, offer a unique set of advantages that make them an attractive alternative for studying insect-borne diseases.

One of the key advantages of zebrafish is their rapid development. Zebrafish embryos develop externally and are transparent during the early stages of life, which allows researchers to observe developmental processes in real-time. This transparency facilitates the study of complex interactions between pathogens and host organisms, providing insights into how infections progress and how the immune system responds (Meijer & Spaink, 2011) <sup>[7]</sup>. Additionally, zebrafish reach sexual maturity within three

months, allowing for rapid generation of offspring and the ability to conduct genetic studies efficiently (Lieschke & Currie, 2007) <sup>[6]</sup>.

The genetic similarities between zebrafish and humans further enhance their appeal as model organisms. Approximately 70% of human genes have a counterpart in zebrafish, and many of the biological pathways that are crucial for disease development are conserved between the two species (Howe *et al.*, 2013) <sup>[5]</sup>. This genetic resemblance enables researchers to study disease mechanisms in zebrafish that are relevant to human health. Furthermore, the advent of advanced genetic manipulation techniques, such as CRISPR-Cas9, has made it easier to create specific genetic mutations in zebrafish, allowing for the study of particular genes involved in disease processes (van der Vaart, Spaink, & Meijer, 2012) <sup>[4]</sup>.

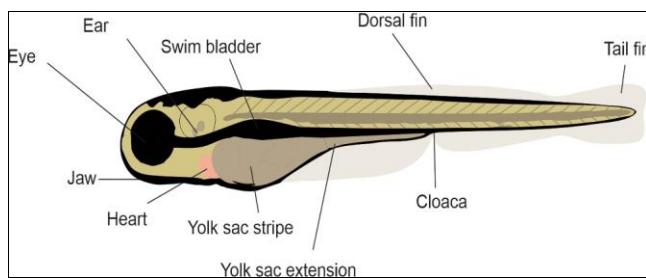
In the context of insect-borne diseases, zebrafish have been utilized to model various aspects of these infections. For instance, they have been used to study the life cycle of the malaria-causing parasite *Plasmodium*, providing insights into how the parasite interacts with its host and the immune response elicited by the host (Franza *et al.*, 2024) <sup>[1]</sup>. Similarly, researchers have employed zebrafish to explore the pathogenesis of dengue virus and the immune responses triggered by chikungunya virus (Palha *et al.*, 2013) <sup>[3]</sup>. By using zebrafish as a model, scientists can investigate the efficacy of potential treatments and vaccines in a controlled environment, which is essential for the development of new therapeutic strategies (Meijer & Spaink, 2011) <sup>[7]</sup>.

The objective of this review is to evaluate the effectiveness and potential of zebrafish as a model for studying insect-borne diseases. We will discuss the biological and genetic characteristics of zebrafish that contribute to their suitability for research, as well as the advantages they offer over traditional animal models. Additionally, we will delve into the specific applications of zebrafish in studying malaria,

dengue, and leishmaniasis, showcasing their potential in drug testing and vaccine development. By providing a comprehensive overview of the current state of research involving zebrafish in the context of insect-borne diseases, this review aims to highlight the significance of this model organism in advancing our understanding of these complex diseases.

### Taxonomy of Zebrafish:

The zebrafish is a derived member of the genus *Brachydanio*, of the family Cyprinidae. It has a sister-group relationship with *Danio aesculapii* (McCluskey BM, Postlethwait JH, 2015) [8]. Zebrafish are too closely related to the genus *Devario*, as demonstrated by a phylogenetic tree of near species (Parichy DM, 2006) [9].



Source: (Franz-Odendaal, Carvajal-Agudelo, & Marchand, 2024) [10]

Fig 1: Zebrafish (*Danio rerio*)

### Biological and Genetic Features of Zebrafish

Zebrafish (*Danio rerio*) have emerged as a powerful model organism in the realm of biomedical research due to their unique biological and genetic characteristics. Their significance in studying insect-borne diseases, such as malaria, dengue, and leishmaniasis, is increasingly being recognized. These diseases pose significant global health challenges, and the need for effective model systems to understand their complex mechanisms and develop therapeutic interventions is paramount. Zebrafish provide several advantages in this context, including their rapid development, transparent embryos, and genetic similarities to humans, all of which facilitate the study of disease mechanisms.

One of the most compelling biological features of zebrafish is their rapid development. Zebrafish embryos develop externally and are transparent, allowing researchers to observe developmental processes and disease progression in real-time. Within just five days post-fertilization, zebrafish embryos develop into larvae with fully formed organs, including the heart, liver, and brain (Nie *et al.*, 2023) [33]. This rapid development is advantageous for studying the early stages of disease pathogenesis and assessing the effects of potential therapeutic compounds. For instance, researchers can quickly evaluate the cardiotoxicity of compounds like azoxystrobin in zebrafish, as demonstrated by Nie *et al.* (2023) [33], providing insights into the safety and efficacy of new treatments.

Moreover, the genetic makeup of zebrafish shares significant homology with humans, making them an ideal model for studying human diseases. Approximately 70% of human genes have at least one zebrafish ortholog, and 84% of genes associated with human diseases have counterparts in zebrafish (Hong *et al.*, 2023) [25]. This genetic similarity enables researchers to study gene functions and disease

pathways that are relevant to human health. Furthermore, zebrafish possess a fully sequenced genome, which facilitates genetic manipulation and the generation of transgenic lines to model specific diseases (Hawkey *et al.*, 2020) [23].

Zebrafish have been extensively used to investigate the genetic basis of insect-borne diseases. For example, researchers have utilized zebrafish to study the neurotoxic effects of insecticides used in vector control (Hong *et al.*, 2023) [25]. By exposing zebrafish to neurotoxic compounds, scientists can assess their impact on the nervous system and identify potential risks to human health. This research is crucial for developing safer insecticides and understanding the long-term effects of pesticide exposure (Hawkey *et al.*, 2020) [23].

In addition to their genetic advantages, zebrafish offer practical benefits over traditional mammalian models such as mice and rats. Zebrafish are cost-effective to maintain, requiring less space and resources compared to larger animals (Abutaha *et al.*, 2015) [12]. Their high fecundity, with females capable of producing hundreds of eggs per week, enables large-scale screening of drug compounds and genetic modifications. This high-throughput capability is particularly valuable for drug discovery and toxicology studies, where large sample sizes are needed to ensure statistical significance (Richardson *et al.*, 2019) [36].

Ethical considerations also play a role in the increasing use of zebrafish as a model organism. Zebrafish research is generally subject to less stringent ethical regulations compared to mammalian models, making them an attractive option for early-stage studies. The ability to conduct research on zebrafish embryos, which are not considered vertebrates until five days post-fertilization, allows researchers to perform experiments without the need for ethical approval, facilitating rapid experimentation and data collection (Ghar *et al.*, 2022) [22].

The transparency of zebrafish embryos is another significant advantage for studying disease mechanisms. Researchers can use advanced imaging techniques to visualize cellular and molecular processes in real-time, providing insights into disease progression and the effects of therapeutic interventions. For instance, researchers have used fluorescent markers to study immune responses in zebrafish infected with *Plasmodium*, the parasite responsible for malaria (Pei & Schmidt, 2022) [34]. This approach allows for the observation of host-pathogen interactions and the identification of potential targets for drug development (Flow, 2021).

Furthermore, the zebrafish model has been instrumental in elucidating the mechanisms of host-pathogen interactions in insect-borne diseases. Researchers have explored the interactions between zebrafish macrophages and leishmaniasis-causing parasites, shedding light on the immune evasion strategies employed by the parasites (de Sousa Andrade, 2015) [19]. Understanding these interactions is crucial for developing effective treatments and vaccines against leishmaniasis, a disease that affects millions of people worldwide (de Souza *et al.*, 2023) [20].

Zebrafish have also been used to study the effects of environmental factors on disease susceptibility. For example, researchers have investigated the impact of pesticide exposure on the immune system and disease resistance in zebrafish (He *et al.*, 2023). By examining the effects of environmental stressors on zebrafish health,

scientists can gain insights into the complex interactions between genetic and environmental factors in disease development (Champer *et al.*, 2016) <sup>[16]</sup>.

The ability to perform genetic manipulations in zebrafish is another critical feature that enhances their utility as a model organism. Researchers can use techniques such as CRISPR/Cas9 to introduce targeted mutations or gene knockouts, allowing for the investigation of specific genes involved in disease processes (Li *et al.*, 2021). This genetic flexibility is particularly valuable for studying the genetic basis of insect-borne diseases and identifying potential therapeutic targets (Cresto *et al.*, 2023) <sup>[18]</sup>.

Zebrafish have also been employed in drug screening and development for insect-borne diseases. Their high-throughput screening capabilities enable the rapid assessment of large libraries of compounds for their efficacy against disease-causing pathogens. For example, zebrafish have been used to screen for antimalarial drugs by evaluating their effects on Plasmodium-infected fish (Kappaun *et al.*, 2018) <sup>[28]</sup>. This approach allows for the identification of promising drug candidates that can be further tested in mammalian models (Zhang *et al.*, 2022) <sup>[41]</sup>. The biological and genetic features of zebrafish make them a valuable model organism for studying insect-borne diseases. Their rapid development, genetic similarities to humans, and practical advantages over traditional models contribute to their effectiveness in disease research. Zebrafish offer a promising alternative for advancing our understanding of disease mechanisms, identifying therapeutic targets, and developing new treatments for insect-borne diseases. As research continues to evolve, zebrafish will undoubtedly play an increasingly important role in combating these global health challenges.

### Challenges of Insect-Borne Diseases

Studying insect-borne diseases presents several challenges, mainly due to the complexity of host-pathogen interactions, the need for effective models, and the rapid evolution of pathogens. Here are some of the key challenges faced by researchers in this field:

#### 1. Complexity of Host-Pathogen Interactions

Understanding the interactions between hosts and pathogens is critical for developing effective treatments and interventions. Insect-borne diseases often involve multiple hosts, including humans, animals, and vectors. Each host may have different immune responses, influencing the course of infection. For instance, the immune response in humans can vary significantly based on genetic factors, prior exposure to pathogens, and co-infections with other diseases.

Additionally, the life cycle of many pathogens involves both vertebrate and invertebrate hosts, complicating the study of their biology and epidemiology. For example, the Plasmodium life cycle involves both humans and Anopheles mosquitoes, each contributing to the transmission dynamics. Understanding how these interactions impact disease progression is essential for developing targeted interventions.

#### 2. Need for Effective Models

Traditional animal models, such as mice and rats, have been widely used in studying insect-borne diseases. However, these models may not always accurately reflect human disease due to significant physiological and immunological

differences. This limitation underscores the need for alternative models that can provide more relevant insights into human disease mechanisms.

Zebrafish, as a model organism, present a promising alternative. Their transparent embryos allow for real-time observation of host-pathogen interactions, and their genetic similarities to humans make them particularly valuable for studying diseases like malaria and leishmaniasis. By utilizing zebrafish models, researchers can gain insights into the dynamics of disease progression and host immune responses.

#### 3. Rapid Evolution of Pathogens

The rapid evolution of insect-borne pathogens poses a significant challenge for disease control efforts. For example, the dengue virus has shown a remarkable ability to mutate, leading to the emergence of new serotypes that can evade immune responses. Similarly, the Plasmodium parasite has developed resistance to antimalarial drugs, complicating treatment strategies.

The continuous evolution of pathogens necessitates ongoing surveillance and research to identify emerging strains and develop new vaccines and therapeutics. Understanding the genetic basis of pathogen evolution and transmission dynamics is critical for formulating effective public health strategies.

#### 4. Environmental Factors and Climate Change

Environmental factors, including climate change, significantly impact the transmission dynamics of insect-borne diseases. Changes in temperature, precipitation patterns, and land use can influence vector populations and their habitats. For example, warmer temperatures can expand the range of Aedes mosquitoes, potentially leading to increased transmission of dengue and chikungunya in new geographic areas.

Additionally, extreme weather events, such as floods and droughts, can disrupt existing ecosystems and impact the interactions between hosts, vectors, and pathogens. Understanding these environmental influences is crucial for predicting outbreaks and implementing effective control measures.

#### 5. Socioeconomic and Cultural Factors

Socioeconomic conditions and cultural practices also play a critical role in the transmission and control of insect-borne diseases. Factors such as urbanization, population density, and access to healthcare can influence disease prevalence and outcomes. In many regions, inadequate infrastructure and limited resources hinder efforts to control vector populations and provide effective treatment for infected individuals.

Public health campaigns must consider these socioeconomic and cultural factors to ensure that interventions are accepted and effective. Engaging communities in vector control efforts and disease prevention strategies can enhance the overall impact of public health initiatives.

The classification of major insect-borne diseases and the identification of their associated pathogens highlight the complexity of this public health challenge. Diseases such as malaria, dengue, chikungunya, and leishmaniasis pose significant threats to global health, and understanding the mechanisms underlying their transmission and pathogenesis is essential for developing effective interventions.

The challenges faced in studying insect-borne diseases underscore the need for innovative research approaches and alternative model organisms like zebrafish. By addressing the complexities of host-pathogen interactions, the rapid evolution of pathogens, and the environmental and socioeconomic factors influencing disease transmission, researchers can enhance our understanding of these diseases and contribute to improved prevention and treatment strategies.

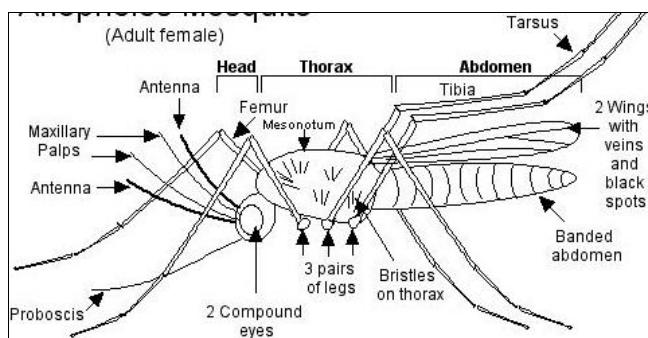
As we move forward, continued exploration of zebrafish models and their application in insect-borne disease research holds great promise for advancing our knowledge and combating these infectious diseases effectively.

**Zebrafish in Specific Disease Studies**

Zebrafish (*Danio rerio*) have emerged as a valuable model organism for studying various insect-borne diseases, particularly malaria, dengue, and leishmaniasis. This section will delve into the specific applications of zebrafish in these disease studies, shedding light on how this small freshwater fish is utilized to model *Plasmodium* infections that cause malaria, explore the immune responses to dengue virus, and investigate the interactions between macrophages and parasites in leishmaniasis. By examining these applications, we can better understand how zebrafish contribute to drug screening and vaccine development, ultimately reinforcing their significance in combating insect-borne diseases.

**Malaria**

Malaria, caused by the protozoan parasites of the genus *Plasmodium* and transmitted by *Anopheles* mosquitoes, remains a significant global health challenge. The complex life cycle of *Plasmodium*, which alternates between the mosquito vector and the human host, poses challenges for research. However, zebrafish have become an important tool in studying malaria, particularly due to their ability to support *Plasmodium* infections. Researchers have developed zebrafish models that mimic the infection process, allowing for the investigation of the parasite's life cycle and the host's immune response.



**Fig 2:** *Anopheles* mosquitoes (*Anopheles*)

One of the key advantages of using zebrafish in malaria research is their transparent embryos, which allow real-time observation of the infection process. When *Plasmodium* is introduced into zebrafish embryos, researchers can visualize the invasion of red blood cells and track the development of the parasites. This unique feature has enabled scientists to study the dynamics of the parasite's lifecycle and assess the efficacy of antimalarial drugs *in vivo*. For instance, a study by Eames *et al.* (2010) demonstrated the utility of zebrafish for screening small molecules for their antimalarial

properties, providing a platform to rapidly identify potential drug candidates.

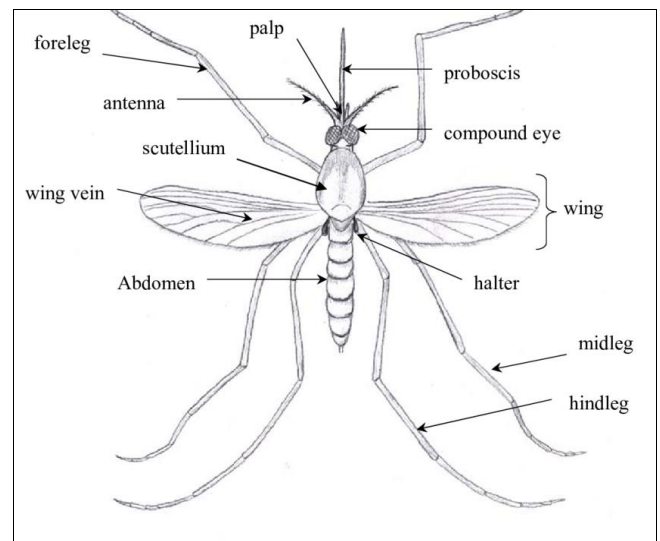
Moreover, zebrafish can be genetically manipulated to express fluorescent proteins, which can be used to label specific cells involved in the immune response. This allows for a more in-depth analysis of how the host's immune system interacts with the malaria parasite. By using transgenic zebrafish that express markers for immune cells, researchers can investigate the activation and recruitment of immune cells during *Plasmodium* infections. This has provided insights into the mechanisms of immune evasion used by the parasite and has identified potential therapeutic targets for intervention.

Another significant aspect of using zebrafish in malaria research is their ability to model severe malaria cases. For example, researchers have successfully induced anemia in zebrafish, simulating one of the critical complications associated with malaria in humans. This model allows for the exploration of the pathological mechanisms underlying malaria-induced anemia and the evaluation of treatment strategies to mitigate this condition.

Overall, zebrafish represent a powerful model for understanding malaria and developing new antimalarial therapies. Their unique biological features facilitate the study of the complex interactions between the parasite and the host, paving the way for novel therapeutic approaches to combat this devastating disease.

**Dengue fever**

Dengue fever, caused by the dengue virus (DENV) and transmitted by *Aedes* mosquitoes, is another major insect-borne disease that poses significant public health concerns worldwide. The complexity of DENV's interaction with the human immune system makes it challenging to study in traditional mammalian models. However, zebrafish have emerged as an innovative alternative for studying dengue virus infections.



**Fig 3:** *Aedes* mosquitoes (*Aedes aegypti*)

One of the primary reasons zebrafish are effective in dengue research is their rapid development and transparent embryos. Researchers can introduce DENV into zebrafish embryos, allowing for real-time observation of the viral replication and spread within the host. This enables scientists to track the progression of the infection, observe

the host's immune response, and assess the impact of potential antiviral treatments.

In a study conducted by Lakhani *et al.* (2018) [29], researchers utilized zebrafish to investigate the innate immune response to DENV. They observed that the zebrafish immune system mounts a robust response to the virus, similar to that of humans. This finding underscores the relevance of zebrafish as a model for studying dengue, as it provides insights into the early immune mechanisms involved in viral clearance.

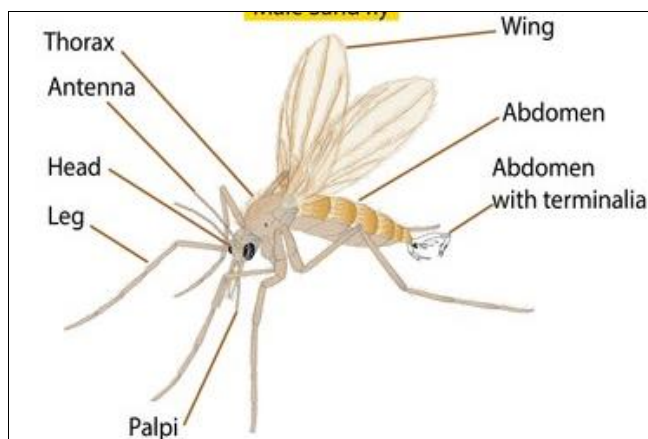
Additionally, zebrafish models have been instrumental in understanding the pathogenesis of dengue. For instance, researchers have studied the effects of DENV on vascular permeability, a critical aspect of severe dengue disease. By examining the changes in blood vessel integrity in zebrafish infected with the virus, scientists have gained valuable insights into the mechanisms that lead to the development of severe dengue, such as dengue hemorrhagic fever.

Moreover, zebrafish have been used to screen potential antiviral compounds against DENV. The ability to conduct high-throughput drug screening in zebrafish allows researchers to rapidly evaluate the efficacy of various compounds in inhibiting viral replication. This approach has led to the identification of several promising candidates for further development as antiviral therapies.

Zebrafish serve as an effective model organism for studying dengue virus infections. Their unique biological characteristics facilitate the observation of viral dynamics, immune responses, and the evaluation of potential antiviral treatments. As the global burden of dengue continues to rise, the insights gained from zebrafish studies will be crucial for developing effective prevention and treatment strategies.

### Leishmaniasis

Leishmaniasis is another significant insect-borne disease caused by protozoan parasites of the genus *Leishmania* and transmitted by sandflies. The disease manifests in various forms, ranging from cutaneous leishmaniasis to visceral leishmaniasis, each with distinct clinical features and challenges. The complexity of *Leishmania* infections and their interactions with the host immune system have made it challenging to study using traditional mammalian models. However, zebrafish have emerged as a promising model for understanding the pathogenesis of leishmaniasis.



**Fig 4:** sandflies (*Phlebotomus papatasi*)

Zebrafish are particularly useful for studying the interactions between *Leishmania* parasites and the host

immune system. Researchers have developed models in which zebrafish are infected with *Leishmania*, allowing for the observation of macrophage-parasite interactions in real-time. This is crucial because macrophages are the primary cells targeted by *Leishmania* during infection. The transparent nature of zebrafish embryos enables scientists to visualize the dynamics of macrophage recruitment and activation in response to the parasite.

In a study by Dey *et al.* (2015), researchers utilized zebrafish to investigate the immune evasion strategies employed by *Leishmania*. They found that the parasites can manipulate macrophage signaling pathways to evade the host immune response. This research has provided valuable insights into the molecular mechanisms underlying *Leishmania* infections and has identified potential targets for therapeutic intervention.

Furthermore, zebrafish models have been employed to evaluate the efficacy of antileishmanial drugs. The ability to conduct drug screening *in vivo* allows researchers to assess the therapeutic potential of various compounds in a dynamic biological context. For example, studies have demonstrated the effectiveness of certain natural compounds in reducing *Leishmania* burden in infected zebrafish, highlighting the potential for discovering new treatments for leishmaniasis.

Another significant advantage of using zebrafish in leishmaniasis research is the potential for genetic manipulation. Researchers can create transgenic zebrafish that express fluorescent markers in specific immune cells, allowing for detailed studies of immune responses during *Leishmania* infection. This approach has facilitated a better understanding of the immune landscape during leishmaniasis and has provided insights into the development of vaccine candidates.

Zebrafish offer a valuable model for studying leishmaniasis and advancing our understanding of the disease. Their unique features enable researchers to investigate the intricate interactions between *Leishmania* parasites and the host immune system, paving the way for the development of new therapeutic strategies and vaccines.

### Future directions

Zebrafish have proven to be an invaluable model organism for studying specific insect-borne diseases such as malaria, dengue, and leishmaniasis. Their unique biological features, including rapid development, transparency, and genetic manipulability, provide researchers with powerful tools to investigate complex disease processes. By utilizing zebrafish models, scientists can gain insights into the mechanisms of infection, host-pathogen interactions, and immune responses, ultimately leading to the identification of new therapeutic targets and the development of effective treatments.

The applications of zebrafish in malaria research highlight their potential for modeling *Plasmodium* infections and screening antimalarial drugs. Similarly, their use in studying dengue virus infections has provided valuable insights into viral dynamics and immune responses, paving the way for the discovery of novel antiviral therapies. In the case of leishmaniasis, zebrafish models have facilitated the exploration of macrophage-parasite interactions and the evaluation of antileishmanial compounds.

As the burden of insect-borne diseases continues to rise globally, the significance of zebrafish as a model organism cannot be overstated. Continued research utilizing zebrafish

models holds great promise for advancing our understanding of these diseases and developing innovative strategies to combat them effectively. By harnessing the advantages of zebrafish, we can make significant strides toward improving public health outcomes and reducing the impact of insect-borne diseases worldwide.

## Conclusion

In this comprehensive review, we have examined the zebrafish (*Danio rerio*) as a valuable model organism for studying insect-borne diseases. The significance of zebrafish in this area cannot be understated, as they present unique biological and genetic features that make them an attractive alternative to traditional animal models such as mice and rats. Their use in research has grown remarkably over the years, particularly in understanding the mechanisms of diseases transmitted by insects, including malaria, dengue, chikungunya, and leishmaniasis. This conclusion aims to restate and emphasize the key points discussed throughout the review while reflecting on the implications of utilizing zebrafish in the field of infectious disease research.

To begin with, the biological features of zebrafish are among the most compelling reasons for their adoption as a model organism. Their rapid development, which allows for the observation of disease progression over a relatively short time frame, is a significant advantage. Zebrafish embryos develop externally and are transparent, enabling researchers to visualize internal processes in real-time without invasive procedures. This transparency is particularly useful for studying the dynamics of infections, as it allows for the direct observation of pathogen interactions with host cells. For example, researchers can track the behavior of Plasmodium parasites, the causative agents of malaria, within the zebrafish bloodstream, providing insights that would be difficult to achieve in other animal models.

Moreover, zebrafish share a considerable degree of genetic similarity with humans. It is estimated that about 70% of human genes have a counterpart in zebrafish, making them an excellent candidate for studying human diseases, including those caused by insect-borne pathogens. This genetic similarity not only helps in understanding disease mechanisms but also aids in the development of therapeutic strategies. For instance, zebrafish models have been instrumental in studying the immune response to dengue virus, allowing scientists to identify potential targets for vaccine development and antiviral therapies. By leveraging the genetic tools available for zebrafish, such as CRISPR/Cas9 gene editing, researchers can create specific genetic modifications that mimic human disease states, further enhancing their utility as a model organism.

In contrast, traditional animal models like mice and rats, while valuable, come with certain challenges. These include higher costs, longer generation times, and ethical concerns surrounding animal research. The use of zebrafish mitigates many of these issues, making it a more ethical and efficient option for researchers. Furthermore, zebrafish research can be conducted on a much larger scale due to their small size and the ability to house many specimens in a compact space. This high-throughput capability facilitates large-scale screening of potential drugs and vaccines, which is essential in the fight against emerging infectious diseases.

However, it is essential to acknowledge the challenges faced in studying insect-borne diseases, even with the advantages offered by zebrafish. One of the major hurdles is the

complexity of host-pathogen interactions. Insect-borne diseases often involve intricate relationships between the host, the insect vector, and the pathogen, which can be difficult to replicate in a laboratory setting. While zebrafish provide a simplified model, researchers must be cautious in translating findings to human health. For instance, while zebrafish can effectively model certain aspects of malaria infection, the immune response in fish is not identical to that of mammals. Therefore, while zebrafish can provide valuable insights, results must be validated in mammalian models before drawing definitive conclusions about human disease.

Additionally, there is a need for more extensive characterization of zebrafish models for different insect-borne diseases. For example, while considerable research has focused on malaria, there is still much to learn about how zebrafish can be utilized to study diseases like chikungunya and leishmaniasis. The immune response to these pathogens may differ significantly, and understanding these differences will be crucial for optimizing zebrafish models for various diseases. Future studies should aim to define the parameters necessary to replicate these diseases accurately, which will enhance the overall efficacy of zebrafish as a research tool in this area.

The application of zebrafish in other specific disease studies is another critical aspect of their significance. As highlighted earlier, zebrafish have been utilized to model Plasmodium infections, investigate immune responses to dengue virus, and explore macrophage-parasite interactions in leishmaniasis. For malaria, zebrafish have proven to be a powerful tool in screening for new antimalarial compounds. In one study, researchers utilized a zebrafish model to assess the efficacy of a library of compounds, ultimately identifying several new candidates for drug development. This ability to screen large numbers of compounds rapidly is invaluable in the search for effective treatments, particularly in the face of rising drug resistance.

In the case of dengue fever, the zebrafish model has allowed researchers to study the virus's effects on the immune system. By observing how the zebrafish immune cells respond to the dengue virus, scientists have gained insights into the mechanisms of viral pathogenesis and the host's immune response. This knowledge is crucial for the development of effective vaccines and antiviral therapies, which remain a significant challenge in the management of dengue infections.

Additionally, zebrafish have been utilized to study leishmaniasis, a disease caused by protozoan parasites transmitted by sandflies. Researchers have employed zebrafish to investigate the interactions between macrophages and Leishmania parasites, shedding light on the host's immune response and the factors that determine disease progression. These studies are critical for identifying potential therapeutic targets for leishmaniasis, which is prevalent in many parts of the world and often resistant to current treatments.

As we reflect on the potential of zebrafish to advance understanding and treatment of insect-borne diseases, it is clear that there is still much work to be done. Future research opportunities are abundant, particularly in refining zebrafish models to better mimic human disease states. This refinement may include the development of more sophisticated models that incorporate co-infections, chronic disease states, and varying environmental factors that

influence disease dynamics. Moreover, integrating zebrafish research with other model systems, including mammalian models, could provide a more comprehensive understanding of insect-borne diseases and their impact on human health. One exciting avenue for future research is the exploration of genetic diversity within zebrafish populations. While most studies utilize a standard laboratory strain, there is potential to investigate how genetic variation among different strains may affect susceptibility to infections. This could lead to the identification of specific genetic factors that confer resistance or susceptibility to insect-borne diseases, providing valuable insights into host-pathogen interactions. In conclusion, the utilization of zebrafish as a model organism for studying insect-borne diseases holds great promise. Their unique biological and genetic features, along with their ability to mimic certain aspects of human disease, make them an invaluable tool for researchers. Although challenges remain in fully understanding the complexities of host-pathogen interactions and the limitations of zebrafish models, their application in specific disease studies has already yielded significant insights. As the field of infectious disease research continues to evolve, it is crucial to further explore and refine the use of zebrafish models to enhance our understanding of insect-borne diseases and improve treatment options. Continued collaboration between researchers and institutions will be essential in driving this field forward, ultimately leading to more effective strategies for combating the global burden of insect-borne diseases.

#### Acknowledgment

The authors would like to thank their respective institutions for their support and resources in facilitating this work.

#### References

1. Franza M, Varricchio R, Alloisio G, De Simone G, Di Bella S. *Zebrafish (Danio rerio)* as a model system to investigate the role of the innate immune response in human infectious diseases. *International Journal of Molecular Sciences*,2024;25(22):12008. <https://www.mdpi.com/1422-0067/25/22/12008>
2. Tobin DM, Ramakrishnan L. Comparative pathogenesis of *Mycobacterium marinum* and *Mycobacterium tuberculosis*. *Cellular Microbiology*,2008;10(5):1027–1039. <https://doi.org/10.1111/j.1462-5822.2008.01133.x>
3. Palha N, Guivel-Benhassine F, Briolat V, Lutfalla G, Sourisseau M, Ellett F, *et al.* Real-time whole-body visualization of *chikungunya virus* infection and host interferon response in *zebrafish*. *PLoS Pathogens*,2013;9(9):e1003619. <https://doi.org/10.1371/journal.ppat.1003619>
4. Van der Vaart M, Spaink HP, Meijer AH. Pathogen recognition and activation of the innate immune response in *zebrafish*. *Advances in Hematology*,2012;2012:159807. <https://doi.org/10.1155/2012/159807>
5. Howe K, Clark MD, Torroja CF, Torrance J, Berthelot C, Muffato M, *et al.* The *zebrafish* reference genome sequence and its relationship to the human genome. *Nature*,2013;496(7446):498–503. <https://doi.org/10.1038/nature12111>
6. Lieschke GJ, Currie PD. Animal models of human disease: *zebrafish* swim into view. *Nature Reviews Genetics*,2007;8(5):353–367. <https://doi.org/10.1038/nrg2091>
7. Meijer AH, Spaink HP. Host-pathogen interactions made transparent with the *zebrafish* model. *Current Drug Targets*,2011;12(7):1000–1017.
8. McCluskey BM, Postlethwait JH. Phylogeny of *zebrafish*, a "model species", within *Danio*, a "model genus". *Molecular Biology and Evolution*,2015;32(3):635–652. <https://doi.org/10.1093/molbev/msu325>
9. Parichy DM. Evolution of *Danio* pigment pattern development. *Heredity*,2006;97(3):200–210. <https://doi.org/10.1038/sj.hdy.6800867>
10. Franz-Odenaal TA, Carvajal-Agudelo JD, Marchand S. Teaching *zebrafish* development in a STEM-based science camp for middle school students. *PubMed*,2024;21(2):92–100. <https://doi.org/10.1089/zeb.2023.0082>
11. Abreu-Villaça Y, Levin ED. Developmental neurotoxicity of succeeding generations of insecticides. *Environment International*,2017;99:55-77.
12. Abutaha N, Mashaly AM, Al-Mekhlafi FA, Farooq M, Al-shami M, Wadaan MA. Larvicidal activity of endophytic fungal extract of *Cochliobolus spicifer* (Pleosporales: Pleosporaceae) on *Aedes caspius* and *Culex pipiens* (Diptera: Culicidae). *Applied Entomology and Zoology*,2015;50:405-414.
13. Aidoo OF, Osei-Owusu J, Asante K, Dofuor AK, Boateng BO, Debrah SK, *et al.* Insects as food and medicine: a sustainable solution for global health and environmental challenges. *Frontiers in Nutrition*,2023;10:1113219.
14. Biswas S, Singh AP, Sagar P. Alteration in kidney biomarkers after inhalation exposure of *transfluthrin*-based liquid mosquito repellent in *Rattus norvegicus* (Berkenhout). *Journal of Science Innovations and Nature of Earth*,2023:59-64.
15. Busch AR. Assessing acute developmental toxicity of *Artemia salina* when exposed to the coastal contaminants TCPM and TCPMOH. Master's thesis, San Diego State University,2022.
16. Champer J, Buchman A, Akbari OS. Cheating evolution: engineering gene drives to manipulate the fate of wild populations. *Nature Reviews Genetics*,2016;17(3):146-159.
17. Contreras M, Sobrino I, de la Fuente J. Paratransgenic quantum vaccinology. *Trends in Parasitology*,2024.
18. Cresto N, Forner-Piquer I, Baig A, Chatterjee M, Perroy J, Goracci J, *et al.* Pesticides at brain borders: Impact on the blood-brain barrier, neuroinflammation, and neurological risk trajectories. *Chemosphere*,2023;324:138251.
19. De Sousa Andrade T. Effects of environmental factors on the toxicity of pesticides to *zebrafish* embryos. Doctoral dissertation, Universidade de Aveiro (Portugal),2015.
20. De Souza SS, Gomes AR, Guimarães ATB, de Lima Rodrigues AS, de Matos LP, dos Santos Mendonça J, *et al.* RETRACTED: Cellulose microcrystalline: A promising ecofriendly approach to control *Culex quinquefasciatus* larvae.

21. Flow G, 10 Containment Strategies for Synthetic Gene Drive Organisms and Impacts on Gene Flow: Monitoring, Modeling and Mitigation, 2021:137.
22. Ghar SB, Das YK, Mulani RM. Green and eco-friendly *lemongrass* palladium metallic nanoparticles for biocompatibility studies in *Danio rerio* and cytotoxicity studies in *Aedes aegypti* mosquito larvae. *Aedes aegypti*, 2022.
23. Hawkey AB, Glazer L, Dean C, Wells CN, Odamah KA, Slotkin TA, *et al.* Adult exposure to insecticides causes persistent behavioral and neurochemical alterations in *zebrafish*. *Neurotoxicology and Teratology*, 2020:78:106853.
24. He YW, Deng Y, Miao Y, Chatterjee S, Tran TM, Tian J, *et al.* DSF-family quorum sensing signal-mediated intraspecies, interspecies, and inter-kingdom communication. *Trends in Microbiology*, 2023:31(1):36-50.
25. Hong T, Park H, An G, Park J, Song G, Lim W. *Fluchloralin* induces developmental toxicity in heart, liver, and nervous system during early *zebrafish* embryogenesis. *Comparative Biochemistry and Physiology Part C: Toxicology & Pharmacology*, 2023:271:109679.
26. Jiao Y, Palli SR. RNA modifications in insects. *Frontiers in Insect Science*, 2024:4:1448766.
27. Ju XD, Xu J, Sun ZS. CRISPR editing in biological and biomedical investigation. *Journal of Cellular Biochemistry*, 2018:119(1):52-61.
28. Kappaun K, Piovesan AR, Carlini CR, Ligabue-Braun R. Ureasases: Historical aspects, catalytic, and non-catalytic properties—A review. *Journal of Advanced Research*, 2018:13:3-17.
29. Khan Z, Khan SH, Mubarak MS, Ahmad A. Targeted genome editing for cotton improvement. *Past, Present and Future Trends in Cotton Breeding*, 2018, 11.
30. Li S, Zheng X, Zhang X, Yu H, Han B, Lv Y, *et al.* Exploring the liver fibrosis induced by *deltamethrin* exposure in quails and elucidating the protective mechanism of *resveratrol*. *Ecotoxicology and Environmental Safety*, 2021:207:111501.
31. Liu X, Zhou X, Xie X, Li C. Advances in CRISPR/Cas9-based gene editing technology in mosquitoes. *Zoonoses*, 2024:4(1):971.
32. Lousada ME, Maldonado EAL, Nthunya LN, Mosai A, Antunes MLP, Fraceto LF, *et al.* Nanoclays and mineral derivatives applied to pesticide water remediation. *Journal of Contaminant Hydrology*, 2023:104264.
33. Nie D, Li J, Xie Q, Ai L, Zhu C, Wu Y, *et al.* Nanoparticles: A potential and effective method to control insect-borne diseases. *Bioinorganic Chemistry and Applications*, 2023:2023(1):5898160.
34. Pei L, Schmidt M, 10 Containment Strategies for Synthetic Gene Drive Organisms and Impacts on Gene Flow. *Gene Flow*, 2022:137.
35. Rehman A, Rahman L, Tehseen B, Khalid HF. Biosensors for determination of pesticides and their residues. *Nanobiosensors: From Design to Applications*, 2020:255-287.
36. Richardson JR, Fitsanakis V, Westerink RH, Kanthasamy AG. Neurotoxicity of pesticides. *Acta Neuropathologica*, 2019:138:343-362.
37. Selvaraj B, Nadana S, Sabariswaran K, Jintae L. Present status of insecticide impacts and eco-friendly approaches for remediation—a review, 2024.
38. Singh A, Shraogi N, Verma R, Saji J, Kar AK, Tehlan S, *et al.* Challenges in current pest management practices: Navigating problems and a way forward by integrating controlled release system approach. *Chemical Engineering Journal*, 2024:154989.
39. Thatyana M. Novel BODIPY photosensitizers and corresponding nano-conjugates in an *in vitro* antimicrobial and anticancer study. Doctoral dissertation, 2020.
40. Tshitenge TB. Transgenic expression of the tsetse fly *Glossina fuscipes fuscipes* olfactory receptor, *Or67d*, in *Drosophila melanogaster*. Doctoral dissertation, University of Nairobi, 2017.
41. Zhang X, Zhang F, Lu X. Diversity and functional roles of the gut microbiota in *Lepidopteran* insects. *Microorganisms*, 2022:10(6):1234.